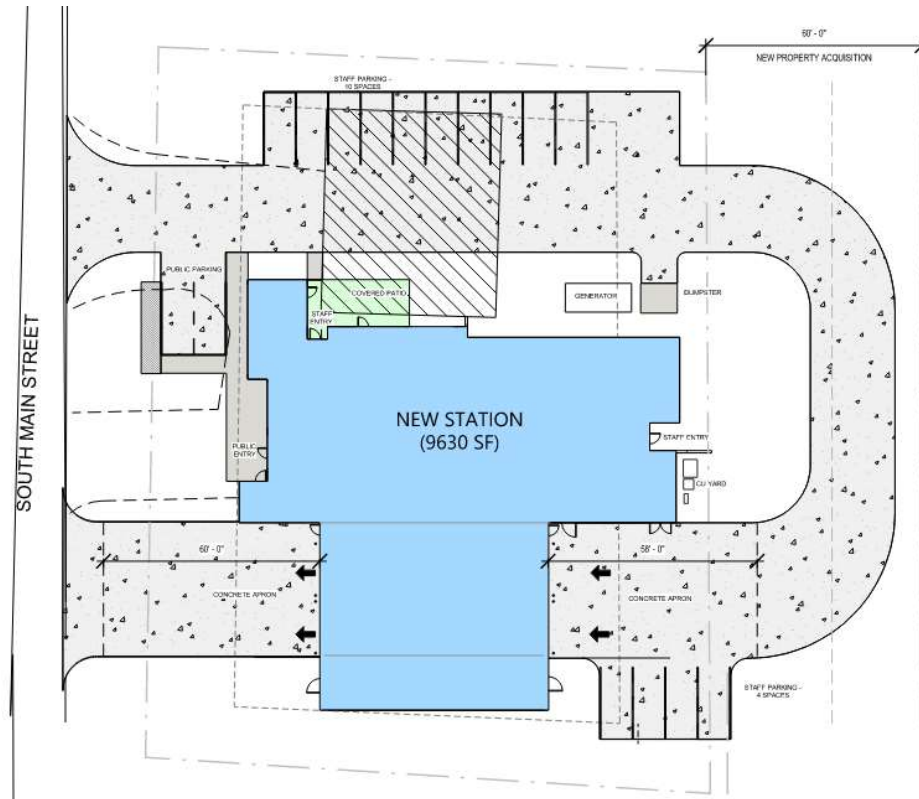


Option 1 – Upgrades of All Public Safety Facilities

New Station 2 – 180 South Main St

- New right-sized, purpose-built facility
- Efficient building performance
- Modernized support spaces
- Drive-thru apparatus bay and associated site improvements
- Designed to allow for continued station operations during construction
- Requires property acquisition



Opinion of Probable Station Cost

Construction:	\$4,934,500
Design Fees & Services:	\$422,000
FFE & Administrative Costs	\$758,450
TOTAL:	\$6,114,950 (2022 Dollars)

New Public Safety Facility (Central Station) – 550 Minot Ave

- New right-sized, purpose-built facility including:
 - Police Department (including Sally Port, booking area, holding area, detainee processing area, evidence storage and weapons storage)
 - Fire Department (including larger drive-thru apparatus bay)
 - 911 Dispatch Center
 - Emergency Operations Center
 - Common Public Entry, Lobby, and Reception
- New Firing Range Facility
- New Rolling Assets Storage Facility
- Significant site improvements
- Requires phased construction

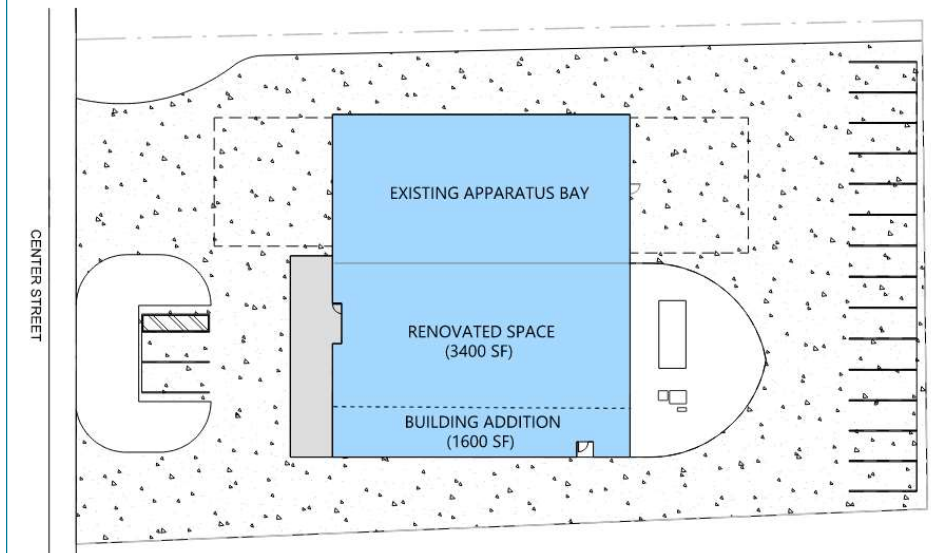


Opinion of Probable Station Cost

Construction:	\$31,036,000
Design Fees & Services:	\$3,162,000
FFE & Administrative Costs	\$4,412,600
TOTAL:	\$38,610,600 (2022 Dollars)

Renovated Station 5 – 651 Center St

- Building addition for additional bunk and support space
- Renovate and modernize existing support spaces
- Minor site improvements
- No changes to existing apparatus bay



Opinion of Probable Station Cost

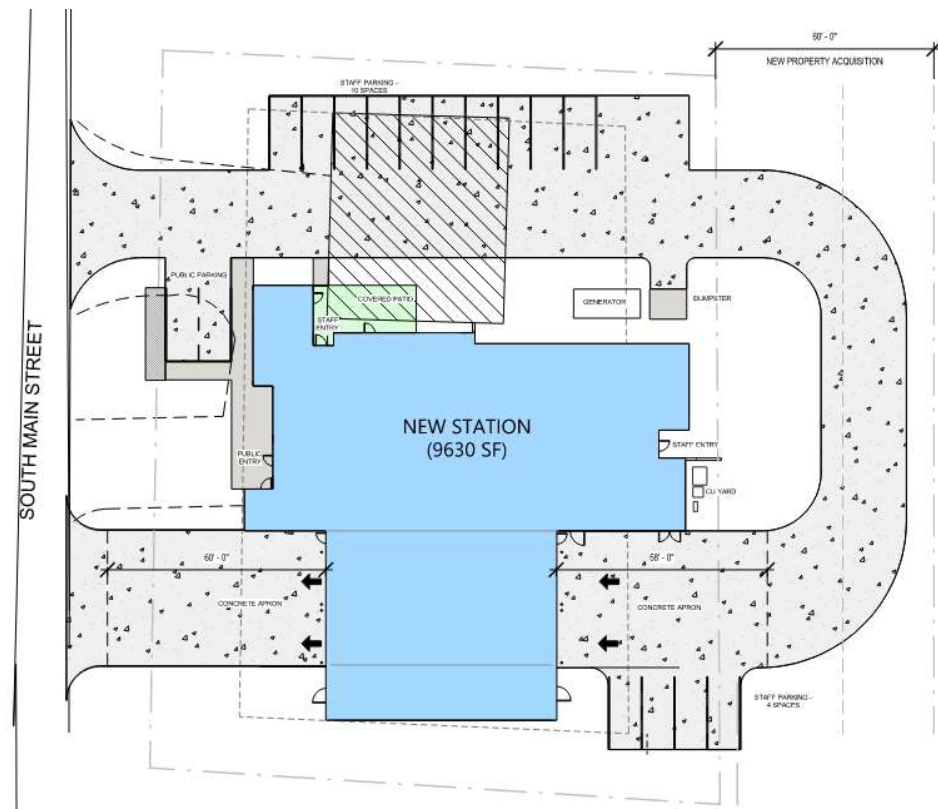
Construction:	\$2,380,000
Design Fees & Services:	\$235,000
FFE & Administrative Costs	\$474,000
TOTAL:	\$3,089,000 (2022 Dollars)

Total Project Cost: \$47,814,550

Option 2 – New Station 2 and Public Safety Facility

New Station 2 – 180 South Main St

- New right-sized, purpose-built facility
- Efficient building performance
- Modernized support spaces
- Drive-thru apparatus bay and associated site improvements
- Designed to allow for continued station operations during construction
- Requires property acquisition



Opinion of Probable Station Cost

Construction:	\$4,934,500
Design Fees & Services:	\$422,000
FFE & Administrative Costs	\$758,450

TOTAL: \$6,114,950 (2022 Dollars)

New Public Safety Facility (Central Station) – 550 Minot Ave

- New right-sized, purpose-built facility including:
 - Police Department (including Sally Port, booking area, holding area, detainee processing area, evidence storage and weapons storage)
 - Fire Department (including larger drive-thru apparatus bay)
 - Emergency Operations Center
 - Common Public Entry, Lobby, and Reception
- New Rolling Assets Storage Facility
- Significant site improvements
- Requires phased construction
- Firing Range Facility to be future project
- No 911 Dispatch Center (to be located at different site)



Opinion of Probable Station Cost

Construction:	\$25,831,000
Design Fees & Services:	\$2,652,000
FFE & Administrative Costs	\$3,654,100

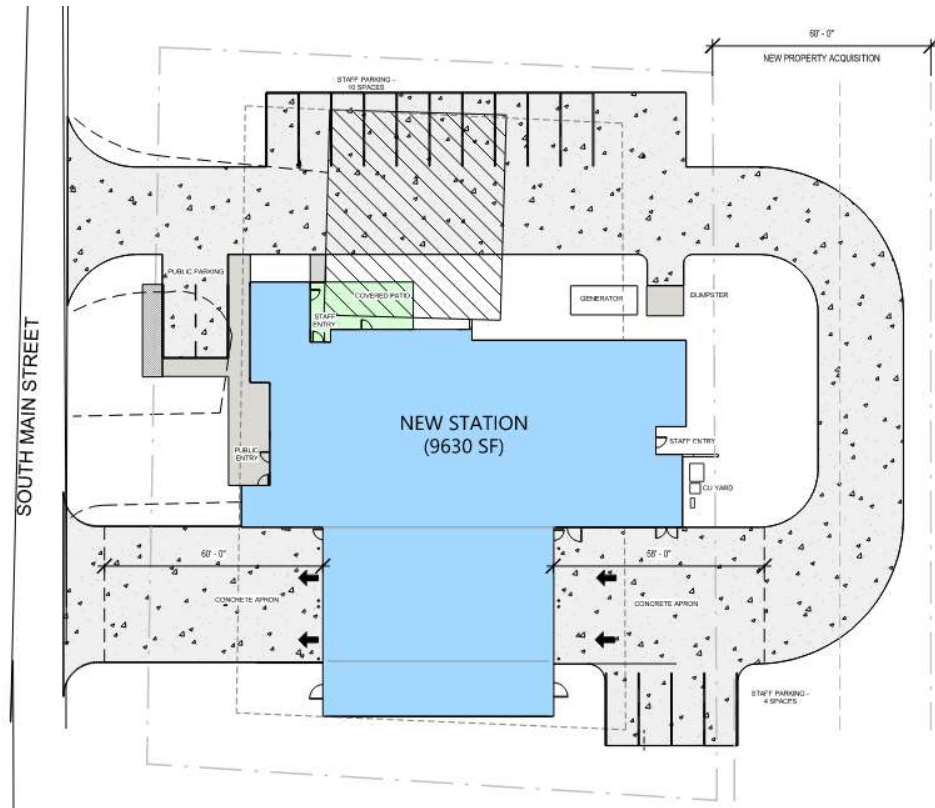
TOTAL: \$32,137,100 (2022 Dollars)

Total Project Cost: \$38,252,050

Option 3 – New Station 2 and Renovated Central Station & New Police Department

New Station 2 – 180 South Main St

- New right-sized, purpose-built facility
- Efficient building performance
- Modernized support spaces
- Drive-thru apparatus bay and associated site improvements
- Designed to allow for continued station operations during construction
- Requires property acquisition



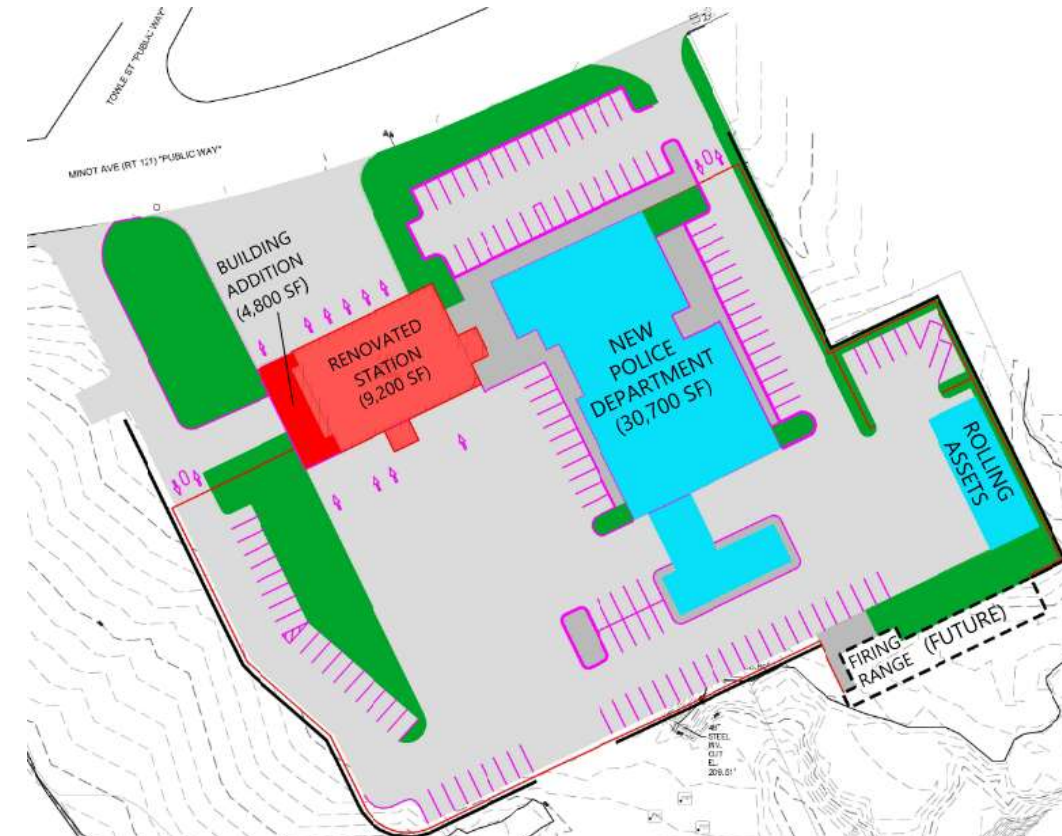
Opinion of Probable Station Cost

Construction:	\$4,934,500
Design Fees & Services:	\$422,000
FFE & Administrative Costs	\$758,450

TOTAL: \$6,114,950 (2022 Dollars)

Renovated Central Station & New Police Department – 550 Minot Ave

- Renovation of Central Station including:
 - Garage bay building addition for tower truck
 - Modernized living, support and administrative spaces
 - No changes to existing apparatus bay
 - Assumes no significant structural upgrades required to existing structure
- New right-sized, purpose-built Police Department including:
 - Police Department (including Sally Port, booking area, holding area, detainee processing area, evidence storage and weapons storage)
 - Emergency Operations Center
- New Rolling Assets Storage Facility
- Significant site improvements
- Firing Range Facility to be future project
- No 911 Dispatch Center (to be located at different site)



Opinion of Probable Station Cost

Construction:	\$24,003,500
Design Fees & Services:	\$2,473,000
FFE & Administrative Costs	\$3,702,350

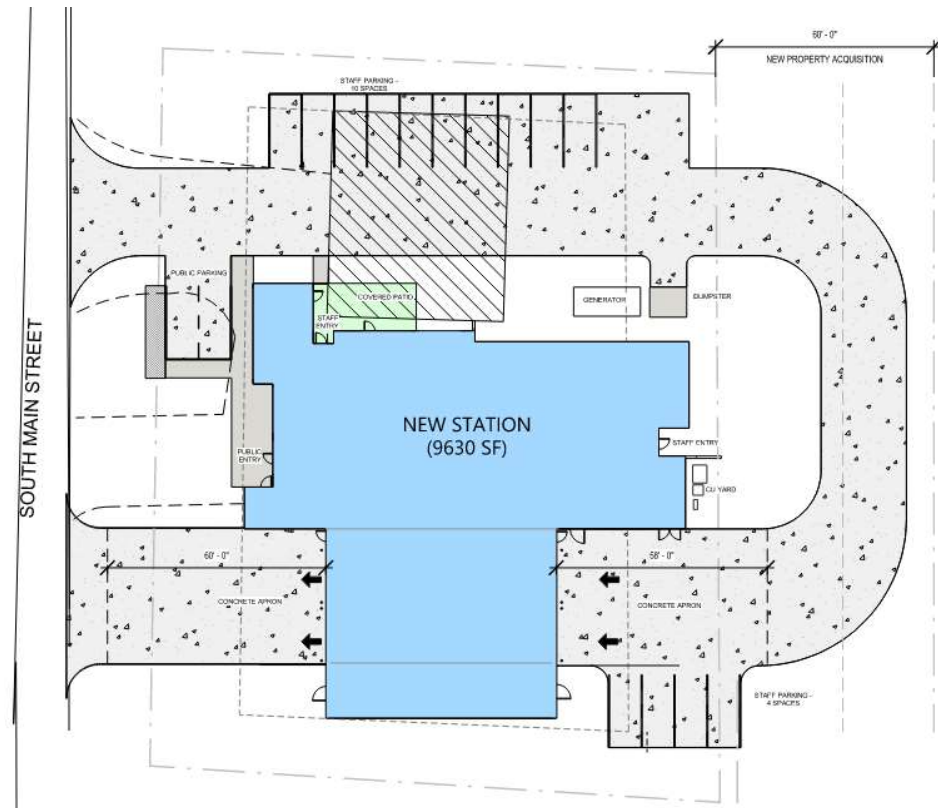
TOTAL: \$30,178,850 (2022 Dollars)

Total Project Cost: \$36,293,800

Option 4 – New Station 2 and Public Safety Facility with Future Expansion

New Station 2 – 180 South Main St

- New right-sized, purpose-built facility
- Efficient building performance
- Modernized support spaces
- Drive-thru apparatus bay and associated site improvements
- Designed to allow for continued station operations during construction
- Requires property acquisition



Opinion of Probable Station Cost

Construction:	\$4,934,500
Design Fees & Services:	\$422,000
FFE & Administrative Costs	\$758,450

TOTAL: \$6,114,950 (2022 Dollars)

New Public Safety Facility (Central Station) – 550 Minot Ave

- New right-sized, purpose-built facility including:
 - Police Department (including Sally Port, booking area, holding area, detainee processing area, evidence storage and weapons storage)
 - Fire Department (including larger drive-thru apparatus bay)
 - Emergency Operations Center
 - Common Public Entry, Lobby, and Reception
- Shell construction above apparatus bay for future expansion
- New Rolling Assets Storage Facility
- Significant site improvements
- Requires phased construction
- Firing Range Facility to be future project
- No 911 Dispatch Center (to be located at different site)



Opinion of Probable Station Cost

Construction:	\$27,786,000
Design Fees & Services:	\$2,844,000
FFE & Administrative Costs	\$3,849,600

TOTAL: \$34,479,600 (2022 Dollars)

Total Project Cost: \$40,594,550